



D 1 Protex HD

Universal ePTFE Gasket Tape HD with higher density

Characteristics

- Very adaptive to surfaces
- Chemical resistance
- Simple to install
- Very high cross section sealability
- Wide area of applications
- Does not stick on flanges
- Easy to remove
- Universal sizes reduce stock keeping

Operating range

p_{max} [psi]	Vacuum . . . 800
t °F	-400 . . . +520
pH	0 - 14

Pressure: Vacuum up to 800 psi (according to the operational and/or assembly conditions)

Temperature: Resistance of the ePTFE sealing material short term +590 °F.

After first temperature exertion the bolts should be Re-tightened.

Main application

- Pipe Columns
- Separation joints
- Machine Housing
- Glass- and Graphite-Devices
- Lined vessels
- Sight glasses
- Hand- and Manhole covers (Not TRD401)
- Ventilation and Air Condition Channels
- Steel and Plastic flanges
- Pipes and devices with highly aggressive chemicals
- Gearboxes

Suitable for

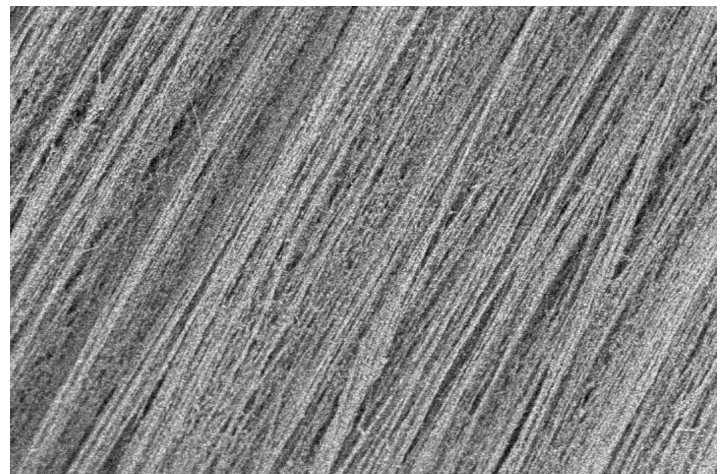
- Chemical industry
- Pharmaceutical industry
- Food industry
- General service

Material

100% expanded PTFE
Chemical resistant against all products with the exception of molten Alcalimetal and elementary Fluor

Approvals

- FDA 21 CFR 177.1550 (PTFE)
- FDA 21 CFR 170.105 (adhesive)
- EG 1935:2004 EU 10/2011



Electron microscopic view

All technical information and advice is based on our experience and will be given most conscientiously but without any liability.

Indication and figures are for guidance only and need to be examined by the user. All sizes are subject to manufacturing tolerances. We reserve the right to modify specifications at any time.

Please note that the technical values cannot be used all at the same time in their maximum values.

ProPack AG

Rudolf-Diesel-Ring 28 . 82054 Sauerlach . Germany

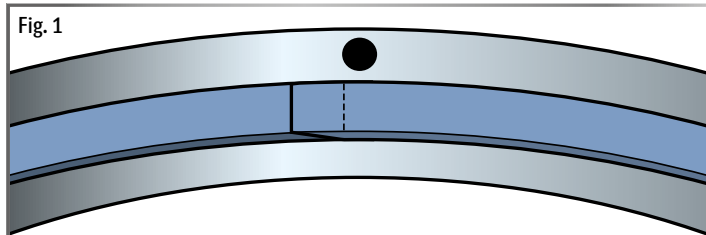
Phone ++49 (0) 8104 6640 0 . Fax ++49 (0) 8104 6640 44

propack@propack.ag

www.propack.ag

TECHNOLOGY MADE IN GERMANY

Installation



Clean flange surfaces
Remove cover from adhesive side

Figure 1
Fix sealing on seal surface
Shaft and overlap ends in front of bolts
Cutting - Conducting a skive cut see Fig. 3
For HD sealing tapes >3 mm wide, shaft one end of the belt (Fig. 1 and 3).

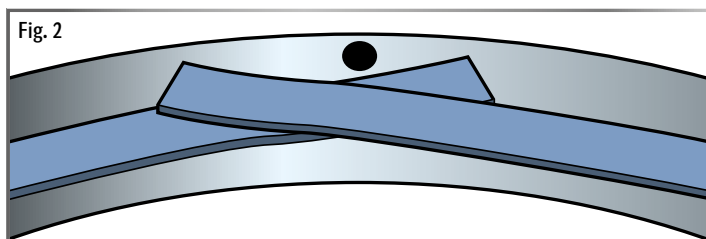


Figure 2
NOTE: Only in gasket width 3 mm in thickness 0,3 and 0,7 mm
For gaskets up to 3 mm, the ends can be crossed at a bolt hole (Fig. 2).

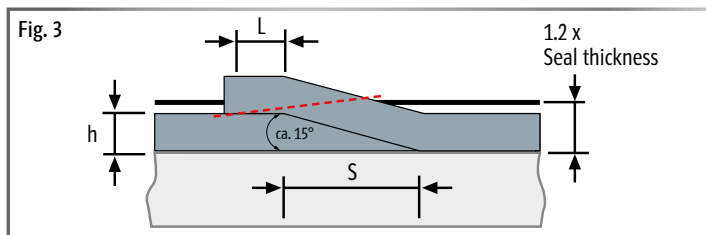


Figure 3
Skive cut for tension sensitive components,
skive cut section (S) = 2 x sealing width.
Overlap length (L) approx. 2-3 x seal thickness (h).
Overlap material at intersection with + 20% height addition (h x 1.2).
The ends must be connected by an angle cut. Cut off the rest

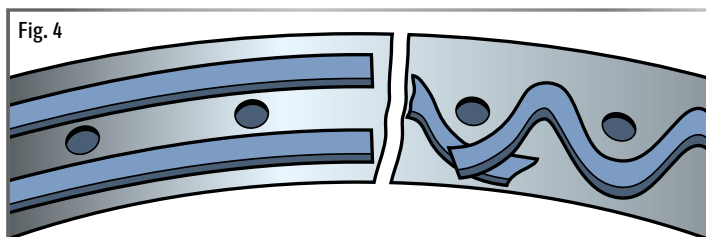


Figure 4
Meandering installation along the pitch circle or additional supporting layer prevents flanges from tipping.

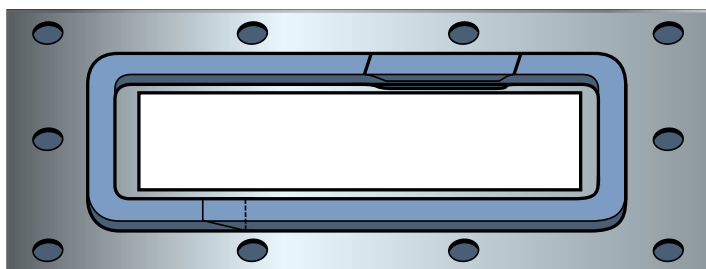


Figure 5
Bedding or double layer in case of large unevenness.

Tighten bolt first hand tight, then crosswise in at least 4 steps evenly until the recommended torque is reached.
To check and ensure permanent tightness, tighten again at the end of the assembly process.

Form of delivery

Order-No.	Dimension width x height	Spool length in feet			Seal area width
		33 ft	82 ft	164 ft	
D1HD303	1/8" x 1/64"		x	x	> 1/8"
D1HD307	1/8" x 1/32"		x	x	> 1/8"
D1HD415	3/16" x 1/16"		x	x	> 5/8"
D1HD425	3/16" x 7/64"		x	x	< DN 500
D1HD645	3/16" x 11/64"		x	x	< DN 1000
D1HD855	5/16" x 7/32"		x	x	< DN 1500
D1HD1070	3/8" x 9/32"	x	x		> DN 1500 or heavy worn sealing surfaces

Fig. 5

All technical information and advice is based on our experience and will be given most conscientiously but without any liability.
Indication and figures are for guidance only and need to be examined by the user. All sizes are subject to manufacturing tolerances. We reserve the right to modify specifications at any time.
Please note that the technical values cannot be used all at the same time in their maximum values.