

D 10 ProFlansch

Formstable biaxially expanded ePTFE sheets or die cutted gaskets

Characteristics

- Excellent adaption
- High blow-out resistance
- No cold flow
- Chemically inert

Operating range

p_{max} [psi]	Vacuum . . . 2900
t °F	-400 . . . +520
pH	0 - 14

Recommended application range: vacuum up to 580 psi at -460 °F to +450 °F

Further technical parameter

Minimum Surface pressure:
VU (580 psi; 0,01) = 26 Mpa
Maximum Surface Pressure:
VO = 150 Mpa
Minimum surface pressure in
operation: BU < 5 Mpa
Cold upset compression value:
KSW = 40 %

Main application

- Flanges
- Vessels
- Lids
- Joints
- Narrow flanges
- Bigger unevenness
- Tension sensitive components (e.g. sight glasses)

Suitable for

- Chemical industry
- Food industry
- Maintenance

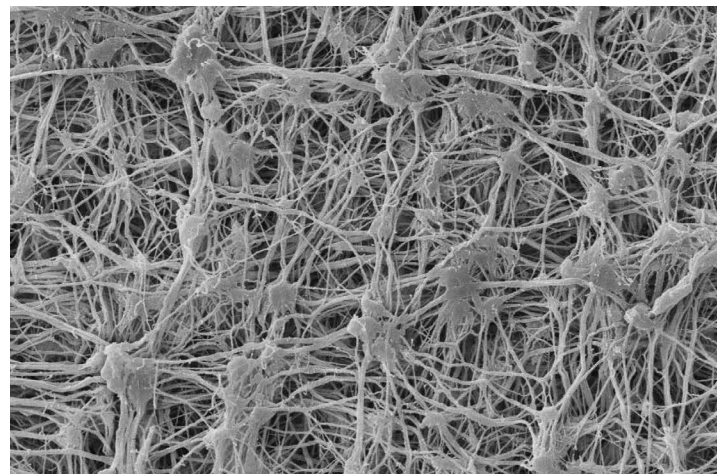
Approvals

- DIN 28090-2
- TA Luft $1,5 \cdot 10^{-8}$ mbar · l/(s·m) @ 480 °F
- TÜV approval according to MUC-KSP-A066
- BAM for gaseous oxygen 140 °F / 580 psi and liquid oxygen
- FDA 21CFR 177.1550 (PTFE)



Form of delivery

- Sheet dimension: 40" x 43" and 60" x 60"
- Sheet gaskets thicknesses: 0.02" / 0.04" / 0.06" / 0.08" / 0.12" / 0.16" / 0.20" / 0.24" / 0.28" / 0.32" / 0.35" / 0.40"
- As insertable gasket or diecut shaped gasket for example hand + manhole gasket in any kind of form upon request



Microscopic view

All technical information and advice is based on our experience and will be given most conscientiously but without any liability.

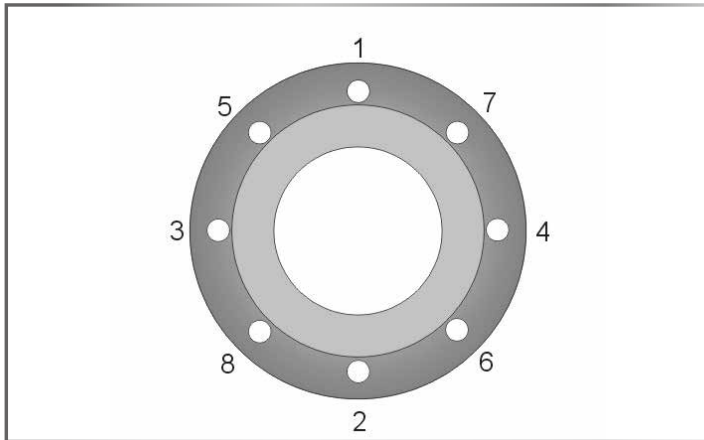
Indication and figures are for guidance only and need to be examined by the user. All sizes are subject to manufacturing tolerances. We reserve the right to modify specifications at any time. Please note that the technical values cannot be used all at the same time in their maximum values.

ProPack AG

Rudolf-Diesel-Ring 28 · 82054 Sauerlach · Germany

Phone ++49 (0) 8104 6640 0 · Fax ++49 (0) 8104 6640 44
propack@propack.ag

www.propack.ag
TECHNOLOGY MADE IN GERMANY



Installation

Clean sealing surface completely. Remove any dirt, corrosion, grease or remainders from old sealing materials.

- Position gasket centric on the sealing surface. Take extra care on vertical assemblies. First tighten bolts finger-tight.

Then continue at least with 4 progressive torque sequences with a torque wrench, always torque crosswise as shown in the sketch (see fig. 1). Apply 25%, 50%, 75% and 100% of the recommended gasket stress.

- Always follow the state-of-the-art guidelines for gasket assembly as well as the recommended torque for your sealing system.

Notes of the flange manufacturer and recommended torques for the sealing system (flange, bolt, gasket) need to be followed.

Gasket sheets technical data

	Compressibility ASTM F36 %	Recovery ASTM F36 %	PQR EN13555	Pressure* max ° psi	Temp (Material)* max ° °F	Material	Q _{min} EN13555 (MPa)	Q _{Smin} EN13555 (MPa)	Q _{Smax} EN13555 (MPa)
D 10 ProFlansch	55	13	0.94 @ 68 °F; QA=30MPa	580	510	ePTFE, biaxial expanded	27	<10 (1)	160

*The max values of pressure and temperature cannot be used at the same time

The provided Pressure and Temperature data is based on optimal installation condition and steady control of the flange connection

Gasket properties following EN 13555 (2 mm / 0.08" thickness) Q_{min}@580 psi He, 0.01 mg/(ms) and

Q_{Smin}@QA 40 Mpa He, L=0.01

(1) Q_{Smin} @ QA 30 MPa, 580 psi He, L=0.01

(2) Q_{Smin} @ QA 60 MPa, 580 psi He, L=0.01

Q_{Smax} @ RT

Form of delivery

thickness (mm) / (inch)	Recommended for Steel Flanges width according DIN 2690 (NW)	Surface pressure/ resulting thickness in (inch)			
		1450 lbf/in ²	2900 lbf/in ²	4350 lbf/in ²	5800 lbf/in ²
2 / 0.08"	≤ 300	0.043	0.034	0.032	0.030
3 / 0.12"	≤ 800	0.071	0.052	0.048	0.045
4 / 0.16"	≤ 800	0.085	0.069	0.063	0.060
5 / 0.20"	≤ 800	0.106	0.086	0.079	0.075
6 / 0.24"	≤ 1500	0.128	0.103	0.095	0.090
7 / 0.28"	≤ 1500	0.149	0.120	0.111	0.105
8 / 0.32"	≤ 1500	0.170	0.138	0.127	0.120
9 / 0.35"	≤ 1500	0.191	0.155	0.143	0.135
10 / 0.40"	> 1500	0.213	0.172	0.159	0.150

All technical information and advice is based on our experience and will be given most conscientiously but without any liability.

Indication and figures are for guidance only and need to be examined by the user. All sizes are subject to manufacturing tolerances. We reserve the right to modify specifications at any time.

Please note that the technical values cannot be used all at the same time in their maximum values.

ProPack AG

Rudolf-Diesel-Ring 28 . 82054 Sauerlach . Germany

Phone ++49 (0) 8104 6640 0 . Fax ++49 (0) 8104 6640 44

propack@propack.ag

www.propack.ag

TECHNOLOGY MADE IN GERMANY

